



Republika e Kosovës  
Republika Kosova-Republic of Kosovo  
Qeveria -Vlada-Government  
Ministria e Punëve të Brendshme / Ministarstvo Unutrasnjih Poslova /Ministry of  
Internal Affairs

---

Departamenti për Riintegrimin e Personave të Riatdhesuar / Departament za Reintegraciju  
Repatriраних Lica / Department for Reintegration of Repatriated Persons

## Integration Policies for Repatriated Individuals

March 2015

# REPUBLIC OF KOSOVO

*Area:* 10,908.1 square km;  
*Population:* 1,815, 606 people;  
*Municipalities:* 38 communes - 7 regions  
*Ethnicities:* 91% Albanian, 3.2% Serb, 5.8% other ethnic groups;  
*Official languages:* Albanian and Serbian languages;  
*Type of government:* Parliamentary republic.



## General Data

- ▶ Level of participation in the labor force 40.5 %
- ▶ Level of inactivity 59.5 %
- ▶ Level of unemployment 30.0 %
- ▶ Level of unemployment among Males 26.9 %
- ▶ Level of unemployment among Females 38.8 %
- ▶ Level of unemployment among the youth (ages 15-24 years old) 55.9%
- ▶ Overall poverty for the year 2011 29.7 %
- ▶ Extreme poverty for the year 2011 10.2 %
  
- ▶ Main source of economic income for families are salaries coming from the public sector 23 % (year 2013)

▶ SOURCE: STATISTICS BUREAU OF THE RKS



## THE EMIGRATION OF KOSOVARS

- ▶ The population of Kosovo is known as an emigrant population due to various political-economic circumstances in the past.
- ▶ The most significant waves of emigration of the Kosovo population occurred during the 1980s reaching the peak in the 1990s and beyond, particularly during 1998 and 1999 due to political causes, with the same emigration trend continuing to this day.
- ▶ The number of Kosovar emigrants was 380.826 , according to the census done in 2011.
- ▶ Relative to the resident population, 21.4% of the population lived abroad.
- ▶ According to later studies (2013) this number is considered to be larger, around 450.000 – 550.000 emigrants living outside Kosovo.
- ▶ Reasons for emigration:
  - ▶ Political reasons pertaining to the period before 1999
  - ▶ Economic and social reasons pertaining to all periods of the emigration of Kosovars



## Emigration according to age and gender - reasons for emigration

By age groups:

- ▶ Ages 25 – 44 years old make up 47.2% of emigrants.
- ▶ Ages over 65 years old (retirees) make up only 1.30% of emigrants.

By gender groups:

- ▶ 56,67 % of emigrants were males, meanwhile
- ▶ 43.33% were female.

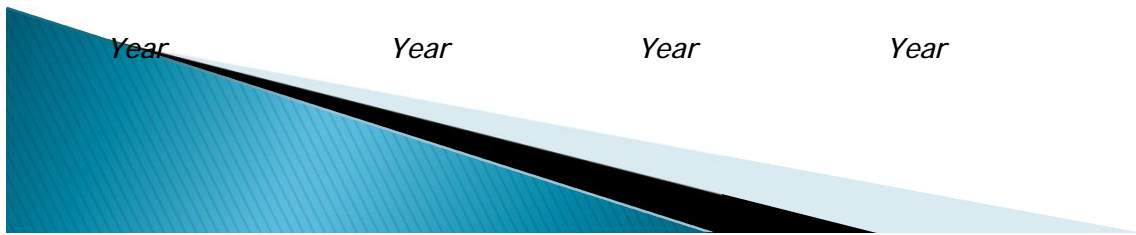
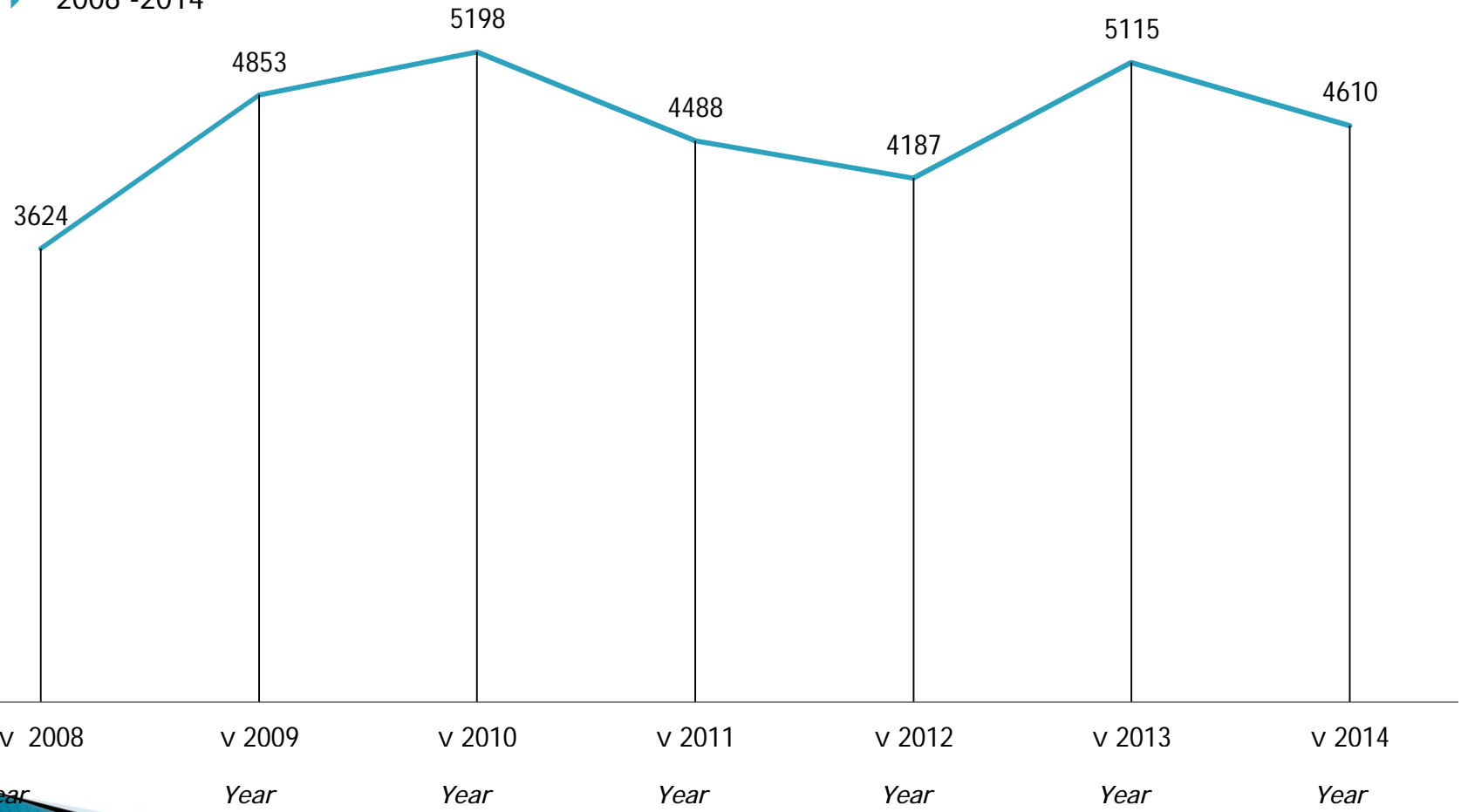
Reasons for emigration varied but those predominant:

- ▶ Family reasons made up 46% and
- ▶ Employment reasons made up 35 %



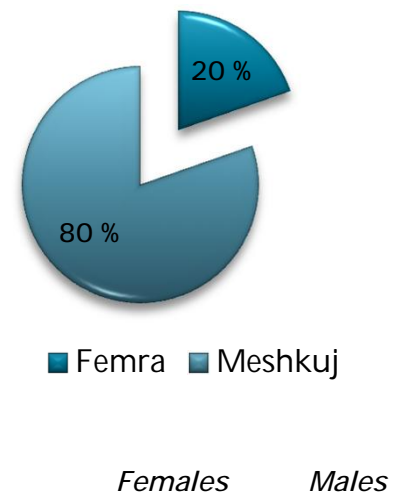
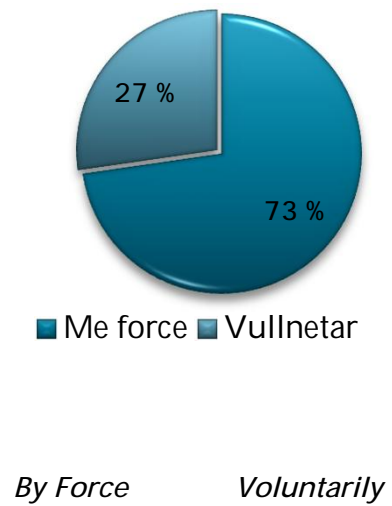
# NUMBER OF REPATRIATED INDIVIDUALS BY YEAR

▶ 2008 -2014

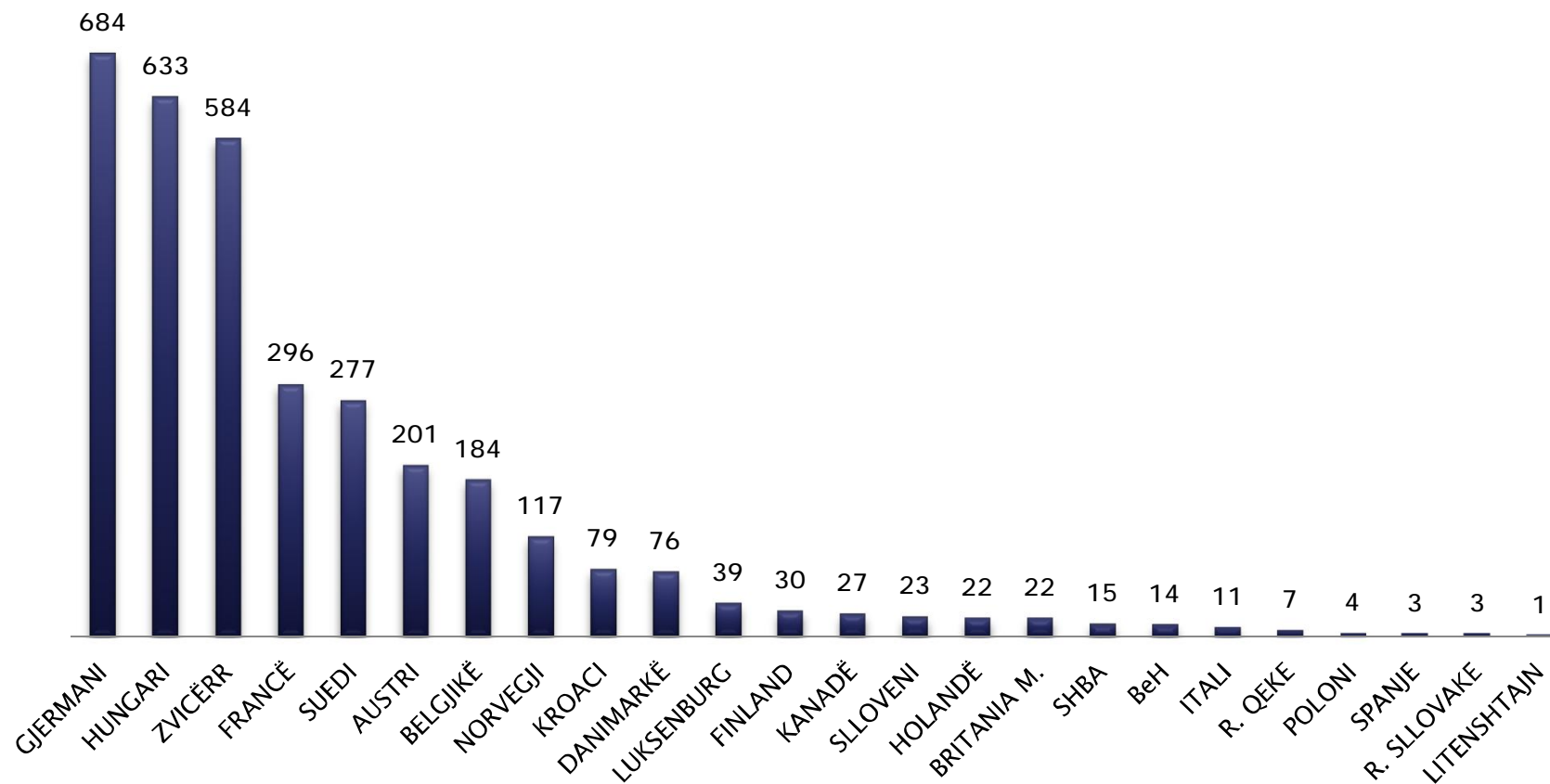


## PROFILE OF REPATRIATED INDIVIDUALS DURING 2014

- ▶ The number of Repatriated individuals during 2014 was 4610



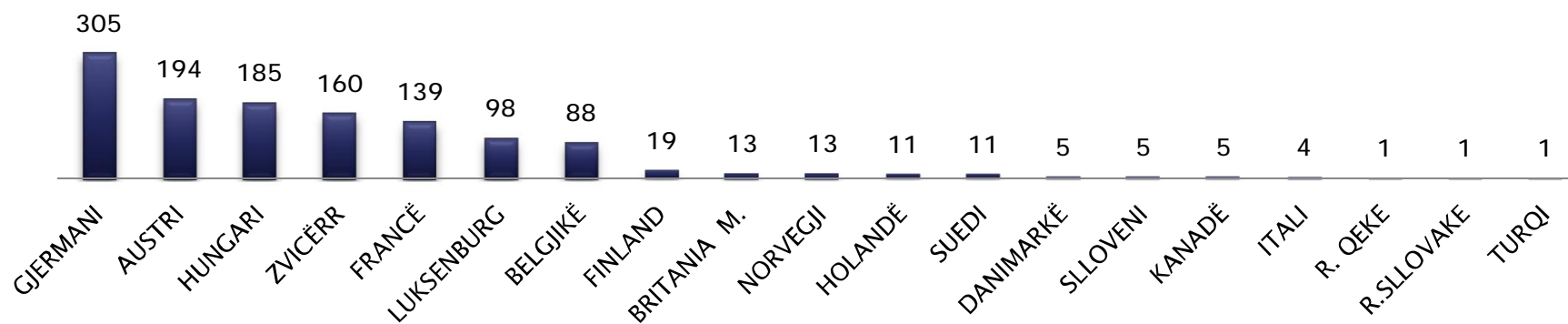
## REPATRIATION BY COUNTRY



*Germany, Hungary, Switzerland, France, Sweden, Austria, Belgium, Norway, Croatia, Denmark, Luxemburg, Finland, Canada, Slovenia, Netherlands, U.K., U.S., Bosnia and Herzegovina, Italy, Czech Republic, Poland, Spain, Slovakia, Lichtenstein*



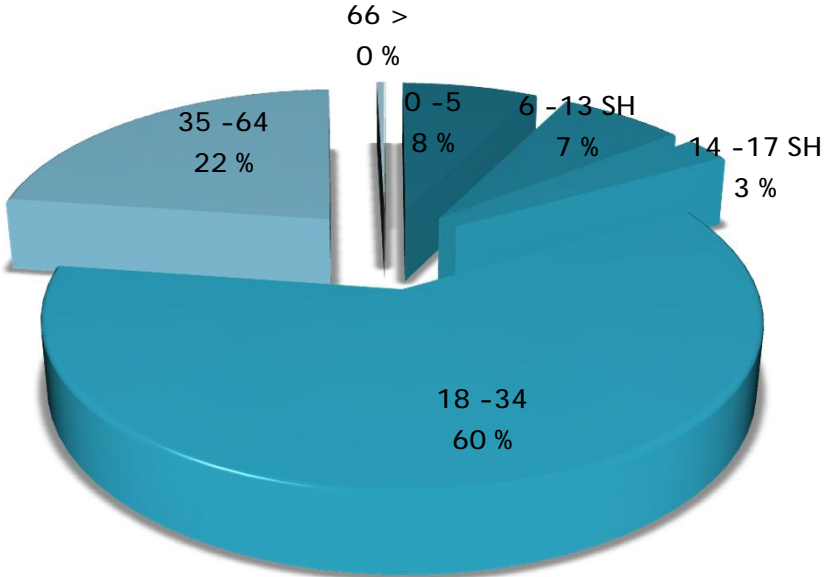
## VOLUNTARY REPATRIATION BY COUNTRY



*Germany, Austria, Hungary, Switzerland, France, Luxemburg, Belgium, Finland, U.K., Norway, Netherlands, Sweden, Denmark, Slovenia, Canada, Italy, Czech Republic, Slovakia, Turkey*

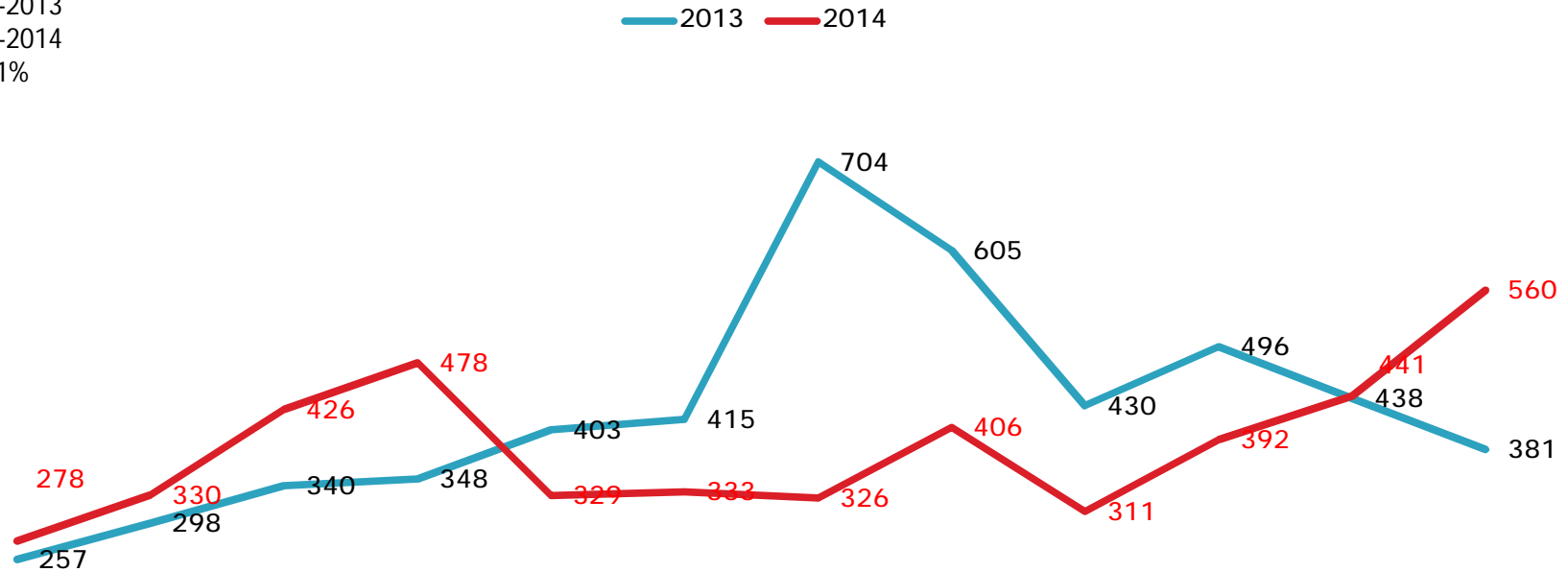


REPATRIATED INDIVIDUALS BY AGE GROUP - 2014

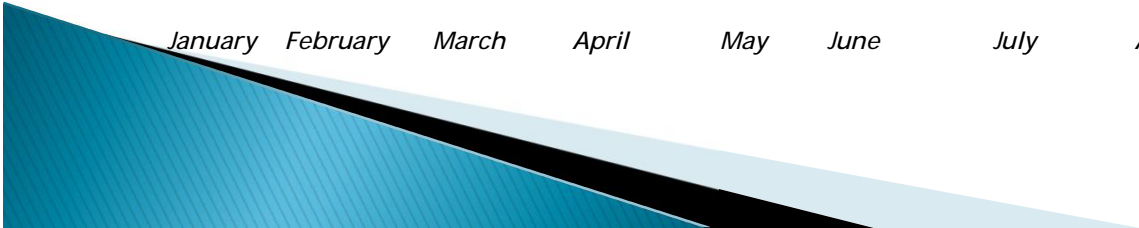


READMITTED INDIVIDUALS DURING THE MONTHS OF JANUARY-DECEMBER 2014

5115-2013  
4610-2014  
or -11%

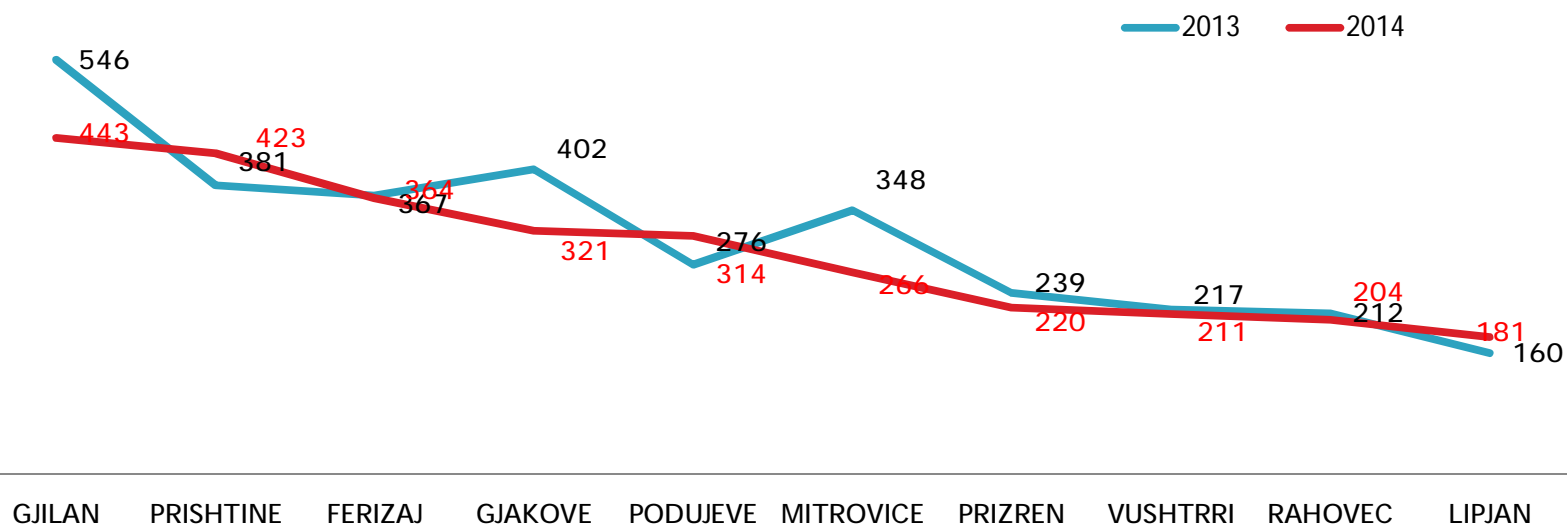


JANAR	SHKURT	MARS	PRILL	MAJ	QERSHOR	KORRIK	GUSHT	SHTATOR	TETOR	NENTOR	DHJETOR
<i>January</i>	<i>February</i>	<i>March</i>	<i>April</i>	<i>May</i>	<i>June</i>	<i>July</i>	<i>August</i>	<i>September</i>	<i>October</i>	<i>November</i>	<i>December</i>



READMITTED INDIVIDUALS ACCORDING TO THE SAME PERIOD OF JANUARY-DECEMBER 2013-2014, FOR THE FIRST TEN PRINCIPALITIES

Readmissions according to principalities 2013, 2014



## REINTEGRATION

Documents of Government Policies for Reintegration:

- ▶ National Strategy for the Reintegration of Repatriated Individuals and the Action Plan for 2013-2017
- ▶ Rules for the Reintegration of the Repatriated Individuals and the Management of the Reintegration Program (September 2013)
- ▶ Laws and by-laws that regulate relevant fields of reintegration in RKS;

The overall aim of the policies is to strengthen those mechanisms to make them independent, completely functional and professional to make sure they offer support and assistance for the sustainable reintegration of repatriated individuals;

The reintegration policies recognize the contribution of potential donors and of the civil society in Kosovo in offering their services for the reintegration of repatriated individuals , as well as encourages their cooperation with state institutions towards this goal;

## Principles:

- Sustainability;
- The balance between assistance and aid through return program/doners and the Program of Reintegration for RKS;
- The flexibility and participation of beneficiaries;
- Equal inclusion without discrimination, without considering the manner of return, based on criteria defined by the governing legislation.
- Equal treatment for all repatriated individuals, taking to consideration their specific needs.



## Affected groups-People with special needs

During the reintegration process of repatriated individuals , special attention is given to categories of special needs:

- ▶ Feeding mothers;
- ▶ Children without family care and those abandoned;
- ▶ Children without parental care, as well as abused and mistreated children;
- ▶ Elderly people without family care;
- ▶ People with mental/physical disability and without family care;
- ▶ Family with grave economic conditions;
- ▶ Victims of human trafficking.



## PROGRAM/FUND FOR INTEGRATION OF REPATRIATED INDIVIDUALS

- It was funded by the Government in 2010
- The Goal of the Program is to assist and support repatriated individuals during the process of reintegration
- The Budget for the implementation of this Program is 3.2 milion EUROS, also planned for the KASH 2015-2017





## Assistance and Support of the Repatriated Individuals for reintegration in the Kosovo society

- ▶ Assistance and Support accessing Public Services
- ▶ Assistance and Support through requests of benefits from the Reintegration Program/Fund
  
- ▶ Assistance and support through requests for benefits from the Reintegration Program.
- ▶ Assistance upon arrival
- ▶ Assistance and support up to 12 months
- ▶ Assistance and support for sustainable integration



## Assistance upon arrival:

- Receiving and Informing
- Medical assistance when needed
- Transportation to the principality of Origin
- Temporary accommodation (up to 7 days) in the Accommodation Center

## Assistance and support up to 12 months:

- Rental accommodation up to 12 months
- Food and hygiene kit or package
- Kit or package for winter assistance
- Medical assistance kit



## Assistance and support for sustainable Reintegration:

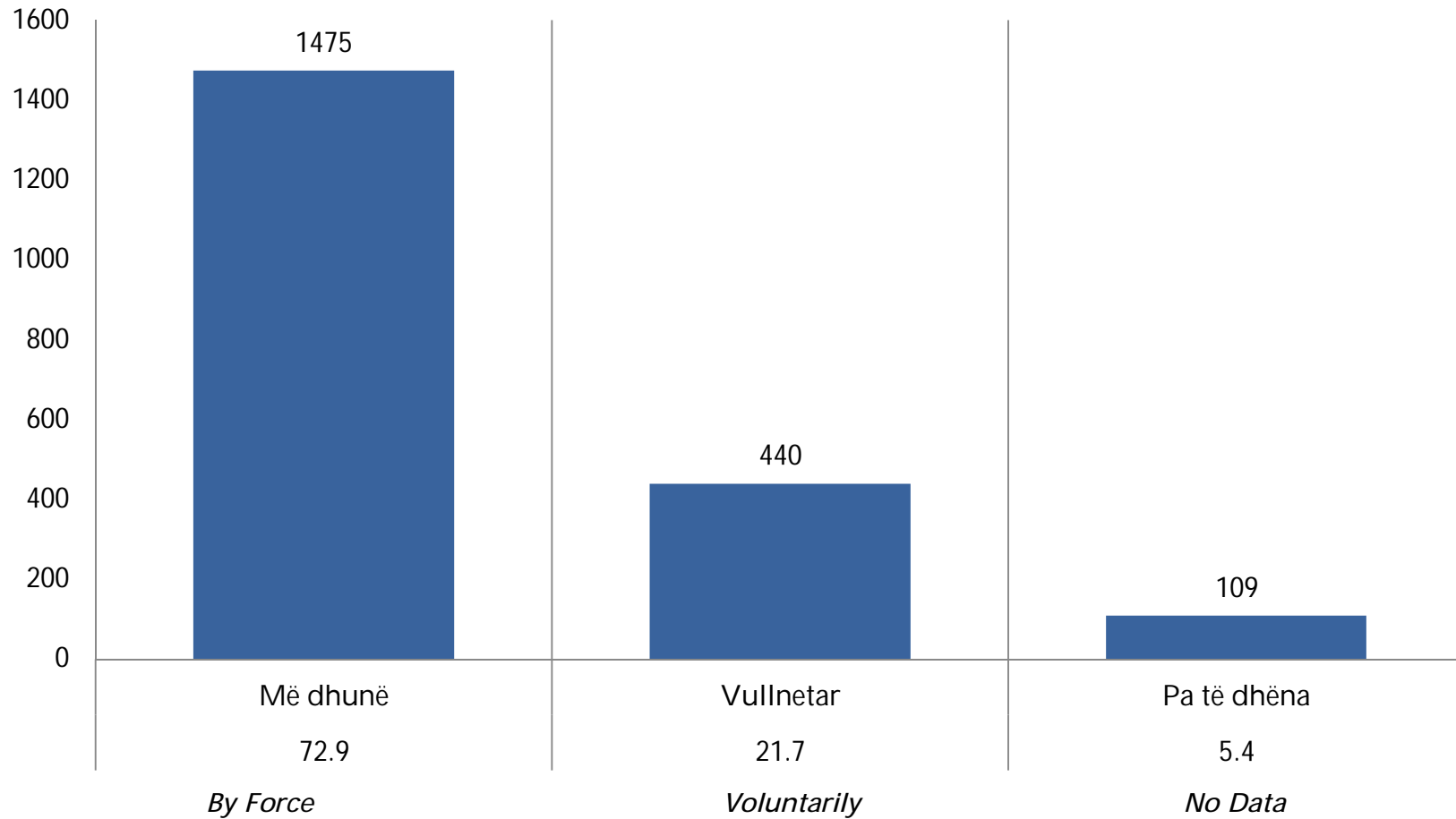
- ▶ Facilitating access to public services (school registration, social scheme, pension scheme, etc)
- ▶ Organizing language courses and supplemental instruction
- ▶ Reconstruction/renovation of homes
- ▶ Furnishing/inventory of homes
- ▶ Professional training – preparation for the job market
- ▶ Intermediary assistance in the hiring process
- ▶ Business Plan Financing



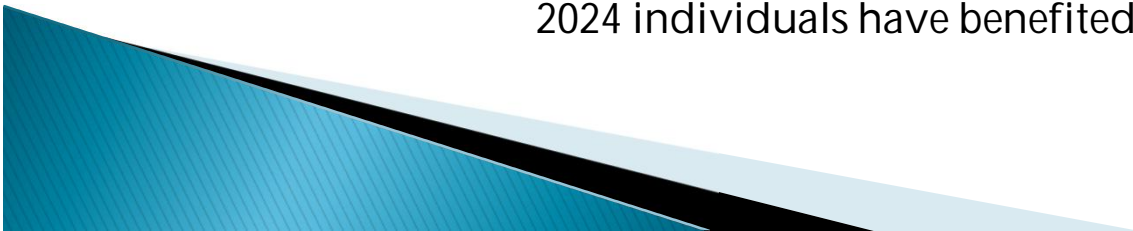
Assistance and Support from the Reintegration Program  
January- December 2014



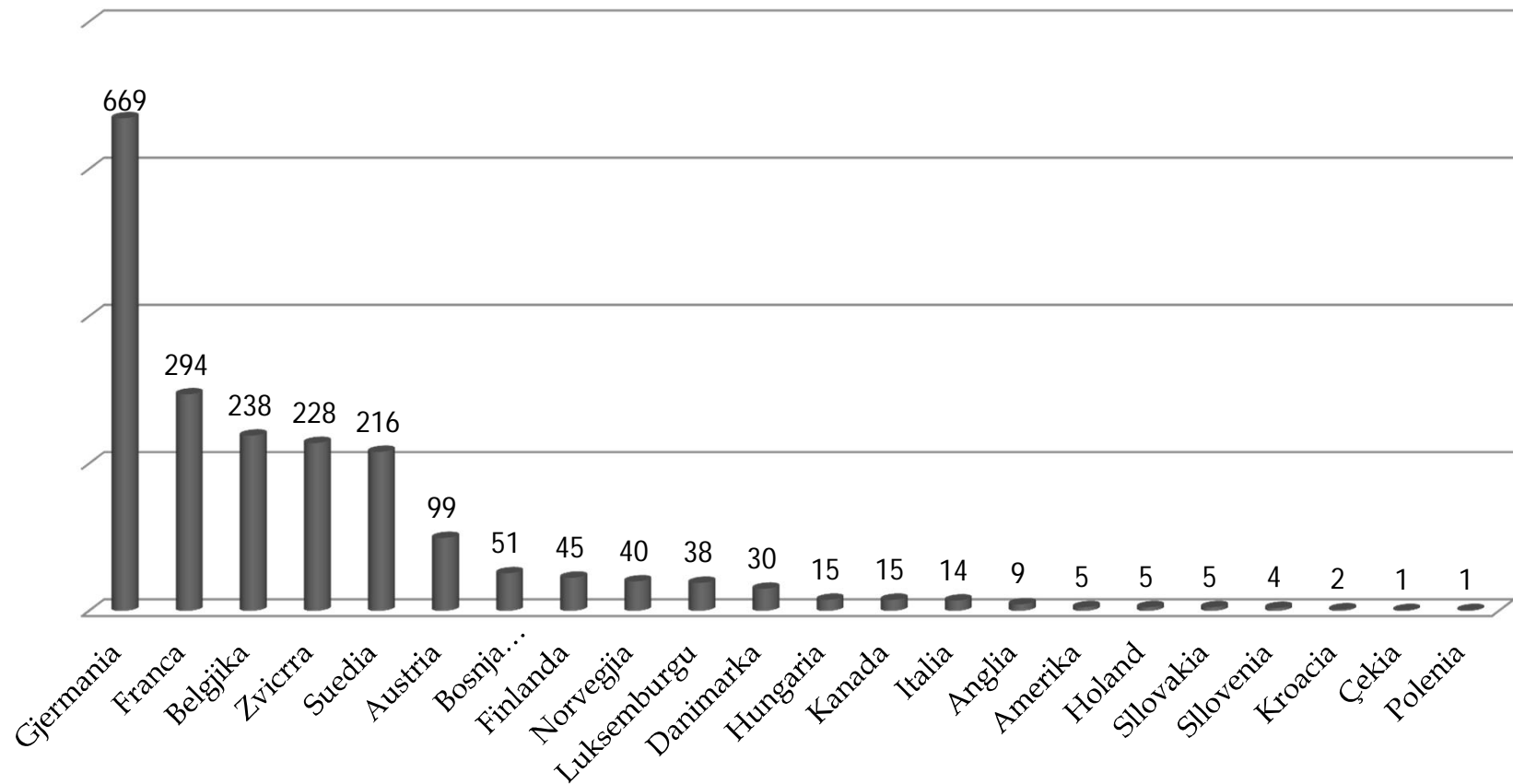
## Profile of beneficiaries from reintegration during 2014



2024 individuals have benefited from the Reintegration Program

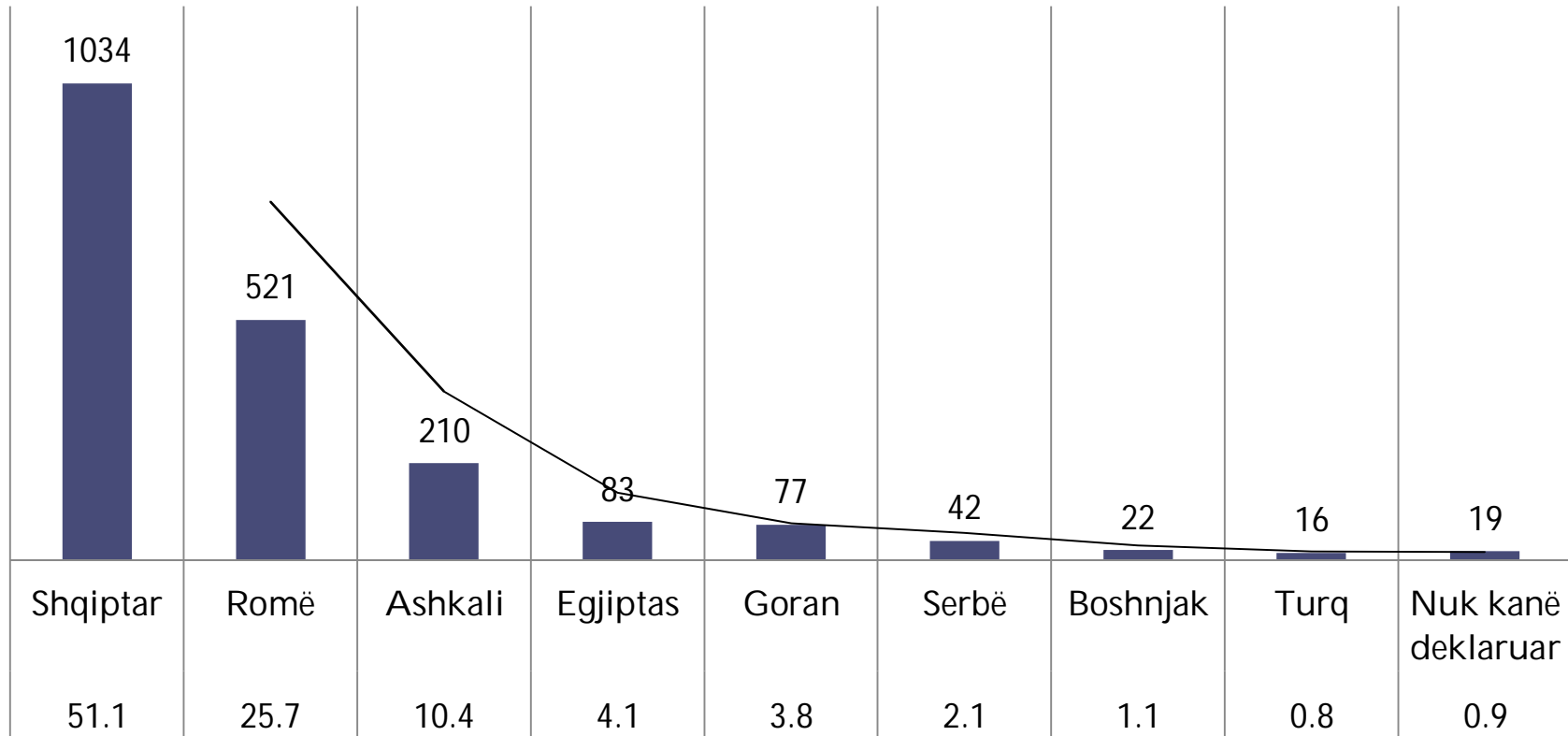


## Beneficiaries according to source country of return



*Germany, France, Belgium, Switzerland, Sweden, Austria, Bosnia and Herzegovina, Finland, Norway, Luxemburg, Denmark, Hungary, Canada, Italy, England, U.S., Netherlands, Slovakia Slovenia, Croatia, Czech Republic, Poland*

## Nationality of reintegration beneficiaries



*Albanian*

*Roma*

*Ashkaelian*

*Egyptian*

*Gorani*

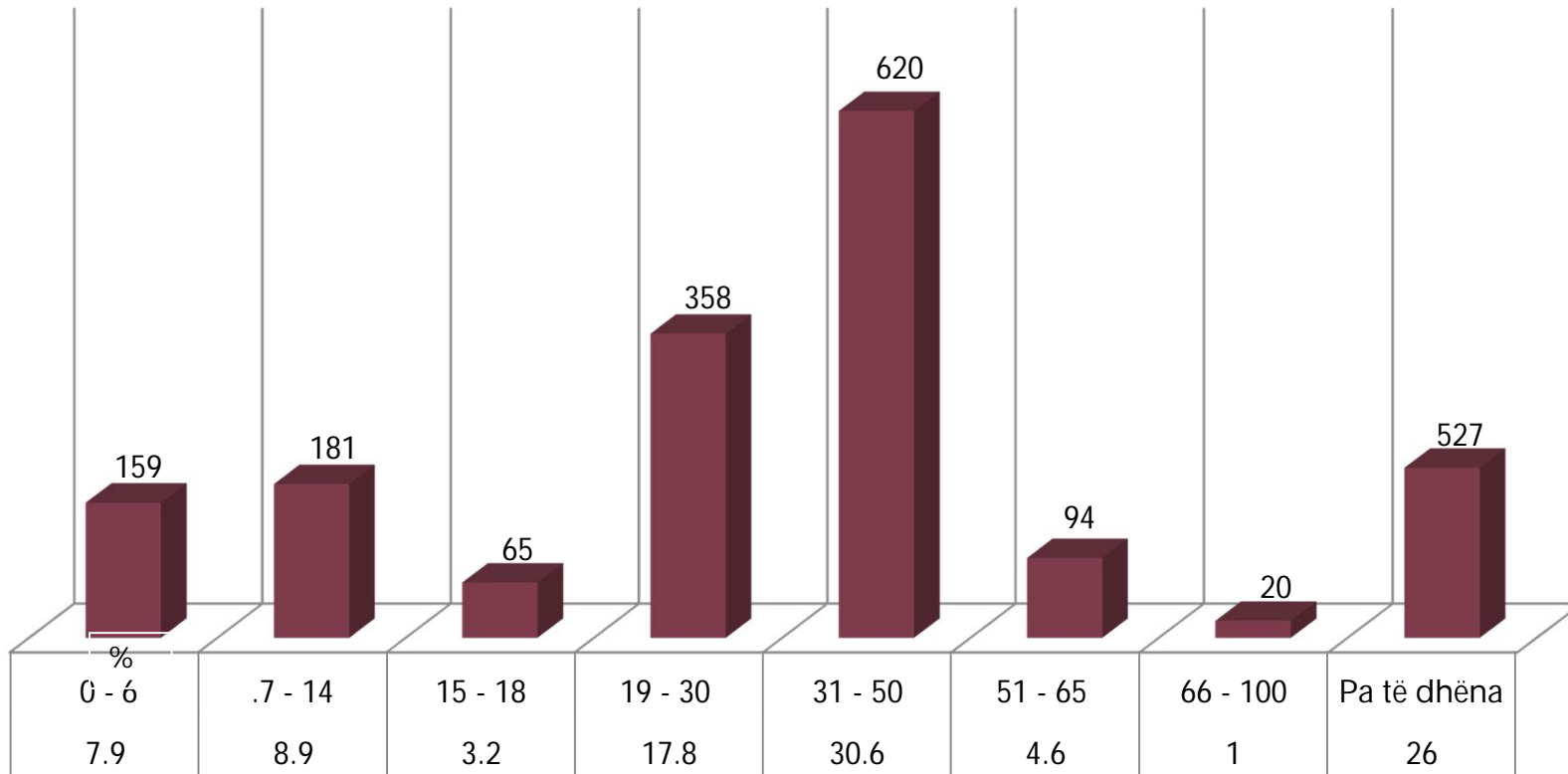
*Serb*

*Bosniak*

*Turk*

*Not Declared*

## Age groups of beneficiaries

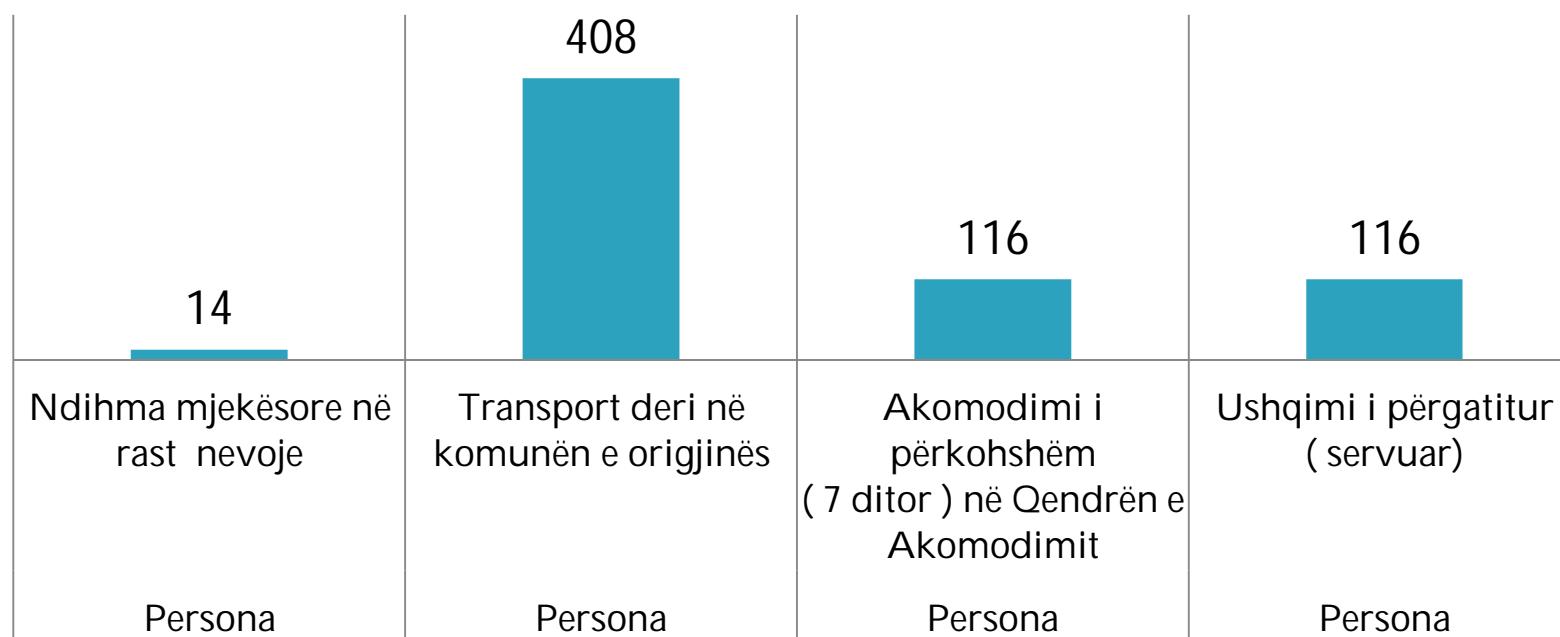


*No data*



# ASSISTANCE AND SUPPORT FROM THE REINTEGRATION PROGRAM

## ▶ ASSISTANCE AND SUPPORT UPON ARRIVAL



*Medical assistance if needed*

*Persons*

*Transportation to the principality of origin*

*Persons*

*Temporary accommodation (7 days) in the Accommodation Center*

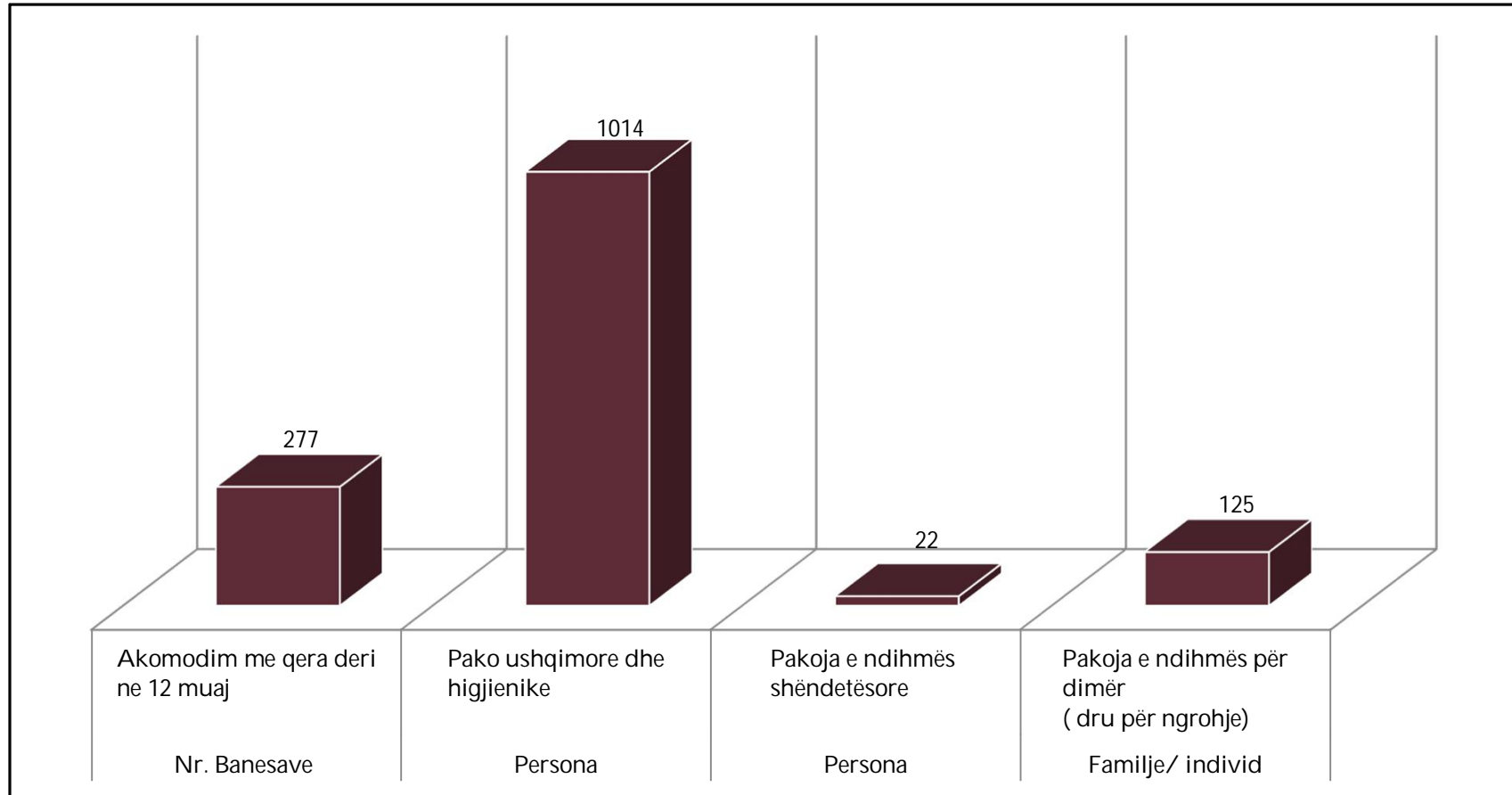
*Persons*

*Prepared Food (Served)*

*Persons*



## ASSISTANCE AND SUPPORT UP TO 12 MONTHS



*Rental Accommodation  
Up to 12 months  
Number of Units*

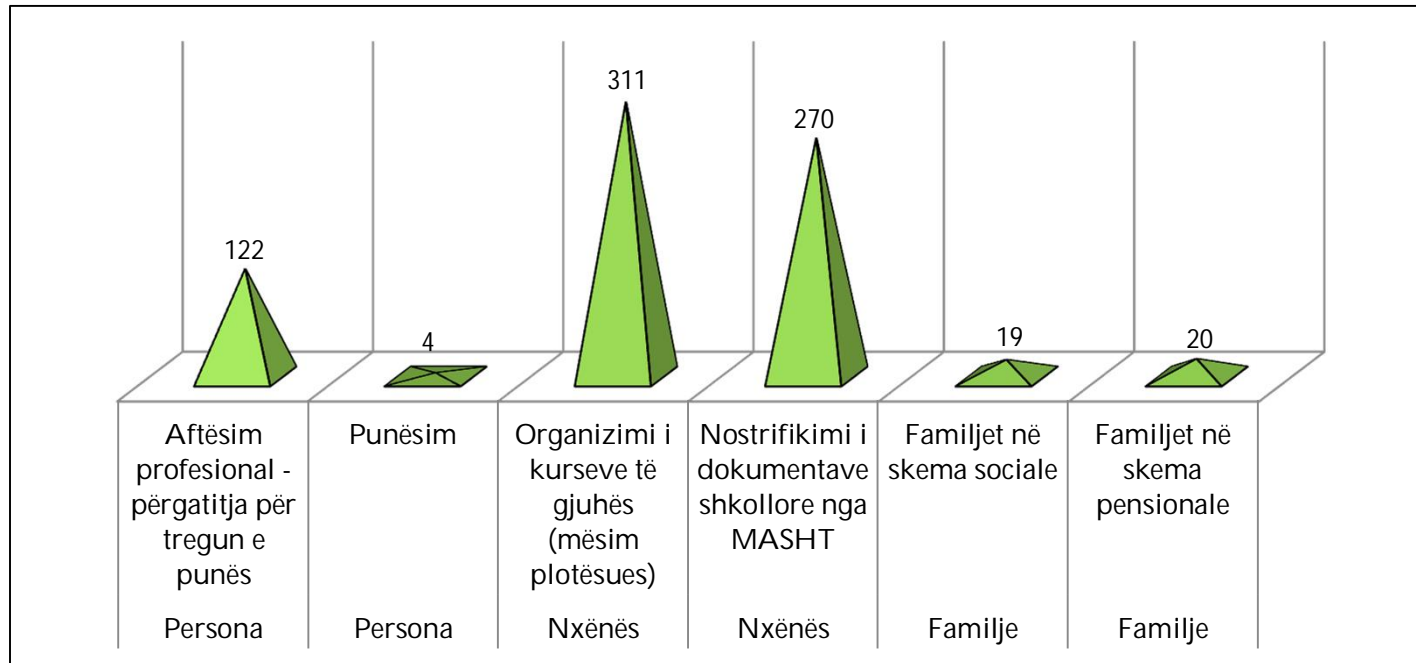
*Food and Hygienic  
kits  
Persons*

*Medical assistance  
kits  
persons*

*Winter assistance kits  
(firewood)  
Family/individual*

## SUPPORT FOR SUSTAINABLE REINTEGRATION

► Sustainable reintegration



*Professional training -preparation for the job market*

*Persons*

*Employment*

*Individuals*

*Organizing language courses (supplemental instruction)*

*Students*

*Accreditation of school documents from MASHT*

*Students*

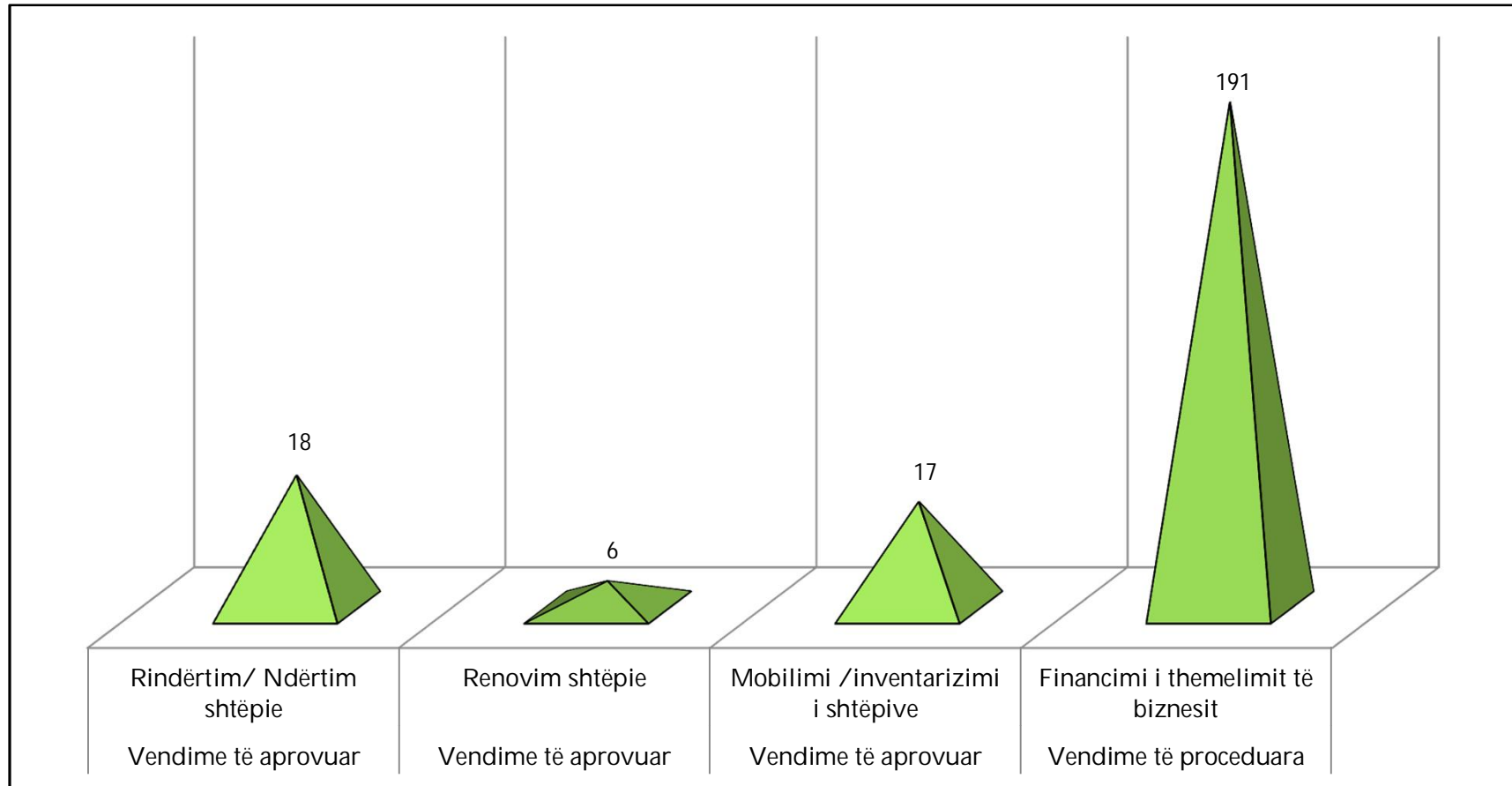
*Families in social schemes*

*Families*

*Families in pension schemes*

*Families*

## SUPPORT FOR SUSTAINABLE REINTEGRATION



*Home Reconstruction/Construction  
Approved Decisions*

*Home Renovation  
Approved Decisions*

*Furnishing/Inventory of  
homes  
Approved Decisions*

*Financing of start -up businesses  
Approved Decisions*

## CHALLENGES

- ▶ Lack of data for Affected Groups
- ▶ Lack of civil documents, school diplomas and medical certifications
- ▶ Lack of social inhabitations
- ▶ Low economic development of the country
- ▶ High unemployment rates (30%)



THANK YOU FOR YOUR ATTENTION!

